

# eurolpacer

**HIGH MIX  
PRODUCTIVITY**



High Mix Productivity

iiP7

# Advanced Printing Solutions

The Europlacer **ii-P7** is a top-tier screen printer renowned for its exceptional performance and unique features. It incorporates 1-micron linear encoders on every axis, ensuring consistent precision to deliver perfectly defined prints. Controlled by our advanced **ii-PS** software, the **ii-P7** seamlessly integrates into both high mix and high volume production environments. Furthermore, it provides functionalities for solder paste and adhesive dispensing via **ADu+** and supports the application of barcode labels through **S-Track**, enabling comprehensive process traceability from the very start of the production process.

# iiP7

**Monitor with touch screen and intuitive ii-PS software**

**SmartCal<sup>2</sup>**  
60-second full calibration

**Under PCB clearance**  
30mm underside component



**High speed, quick changeover, single pass stencil cleaning**

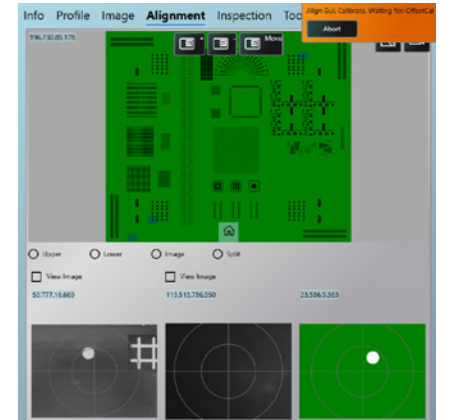
**2D+ paste inspection**  
Post print evaluation of solder paste deposit for presence and bridging

## KEY FEATURES



### SmartCal<sup>2</sup>

In just 60 seconds, the **SmartCal<sup>2</sup>** system performs a comprehensive analysis of numerous critical data points. This includes localized camera scaling of pixels per millimeter, rotation and offset calibration as well as meticulous table Z deviation assessment. Notably, **SmartCal<sup>2</sup>** has significantly enhanced its data gathering capabilities, now collecting a remarkable 88% more data points to guarantee the utmost alignment accuracy and repeatability.



### ADu+

The **ii-P7** screen printer can deploy the unique **Advanced Dispense Unit (ADu+)** to dispense a wide range of media including paste and glue.



### S-Track

**S-Track** allows the placement of barcode labels anywhere on the PCB after printing. This introduces traceability earlier in the line.



### SPI closed loop

Enables neighboring SPI machine feedback to adjust printer process parameters



### Velocity / Velocity+

A software upgrade to **Velocity** mode offers a 7-second cycle time for the efficiency of your production line. **Velocity+** pushes it to an even quicker 5-second cycle time with the same level of accuracy.

### CFX & Hermes compatibility

Latest industry communication protocols



## BENEFITS



### Machine simplicity

- Ultra low maintenance
- Fast set-up
- Low cost of ownership



### High flexibility

- Traceability: **S-Track** Barcode Placement
- Post print additive deposition of paste and adhesive
- Prototyping with **ADu+**
- Large Print Area



### Accuracy

- Exceptional repeatability 20µm @ 6 sigma 2Cpk
- Dual Roving camera for a perfect board and stencil alignment



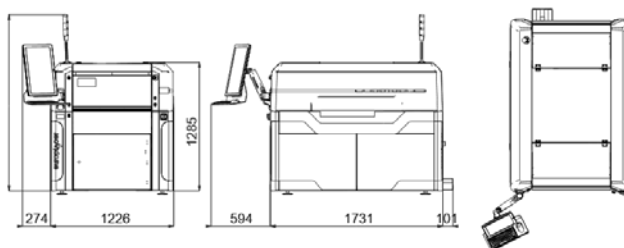
### ii-Tab management (coming soon)

- Real time monitoring of critical production data
- **CFX** interface



### Warranty

- 5 years parts warranty\*



## TECHNICAL SPECIFICATIONS

### PCB Specifications

|                    |                                       |
|--------------------|---------------------------------------|
| Max board size     | 610mm (x) x 515mm (y)                 |
| Min board size     | 45mm (x) x 45mm (y)                   |
| Maximum PCB weight | 1Kg (2.2lb)                           |
| Max PCB thickness  | Up to 8mm (0.2") including 1% warpage |
| Min PCB thickness  | 0.2mm (0.315")                        |

### Software

|                  |                                 |
|------------------|---------------------------------|
| User interface   | 22" touch screen monitor        |
| Operating system | Microsoft Windows™ 10 or higher |

### Facilities

|                       |   |
|-----------------------|---|
| Power consumption     | 13 Amps   |
| Power supply          | 110V – 240V   |
| Air supply            | 6 bar clean air supply  |
| Air consumption       | 1.4 litres per cycle without clean, 16 litres during USC                            |
| Operating temperature | 10°C to 35°C (50°F to 95°F), humidity 30% to 50% relative humidity (non condensing) |
| Weight                | 650Kg   |
| Crated weight         | 800Kg   |
| Machine dimensions    | 1226mm x 1731mm x 1285mm (L x W x H)  |

### Printer Specifications

|                                 |   |                               |  |
|---------------------------------|---|-------------------------------|--|
| Underside component clearance   | 30mm  | PCB separation speed          | 0.1-20mm/sec   |
| Underside edge clearance        | 5mm   | Print modes                   | Print/print, flood/print, print/flood  |
| Minimum board edge clearance    | 3mm   | Transport direction           | Right-left, left-right, left-left, right-right   |
| Machine alignment repeatability | 12.5µm @ 6 sigma 2Cpk                               | Cycle time                    | 9-second standard, 7-second and 5-second available via upgrade. Excludes process elements.       |
| Full process repeatability      | 20µm @ 6 sigma 2Cpk                                 | Up/down line protocol         | SMEMA, Hermes  |
| Max print area                  | 610mm (x) x 515mm (y)                               | SPI closed loop               | Feedback loop with 3rd party SPI machines  |
| X/Y PCB alignment               | ± 5mm   | Stencil paste roll inspection | Automatic validation of paste for defect prevention (standard)                                   |
| Stencil image                   | Front and centre dedicated                          | PCB support                   | Magnetic tooling pins, Laser guided position assistance optional. 3rd party solutions available. |
| Stencil load/unload             | Fully automatic (standard)                          | Camera field of view          | 8mm by 10mm  |
| Stencil frame size (max)        | 736.6mm (29") x 736.6mm (29") max frame height 40mm | Camera system                 | Dual roving camera, Look down/look down  |
| Stencil frame size (min)        | 584mm (23") x 584mm (23") max frame height 40mm     | Number of fiducials           | Unlimited  |
| Squeegee pressure               | 1-20Kg  | Fiducial size                 | 0.5 – 5mm  |
| Squeegee control                | Pneumatic control using proportional valve          |                               |  |
| Print speed                     | 5-250mm/sec   |                               |  |

## OPTIONS

- 2D paste inspection
- **2D+** paste inspection with bridge detection
- Statistical Process Control (SPC)
- Laser guided tooling
- Snugger PCB edge clamp
- 3<sup>rd</sup> party tooling solutions available
- Advanced paste dispenser
- **Velocity** 7 secs plus print process
- **Velocity+** 5 secs plus print process
- **ADU+** Post print deposition of glue and paste
- Product set up verification
- 3<sup>rd</sup> party SPI communication loop
- **S-Track** Barcode placement
- Product Process Traceability
- Single Pass under screen cleaner
- **ii-Tab** Real time monitoring
- **CFX** messages

\* With maintenance agreement

As part of our policy of continuous development, specifications are subject to change without notice.

eurolacer HIGH MIX PRODUCTIVITY www.eurolacer.com



**Europlacer UK**  
30 Factory Road  
Upton Industrial Estate  
Poole, Dorset BH16 5SL

United Kingdom  
contact@eurolacer.co.uk  
+44 (0)1202 266500



**Europlacer Americas**  
4640 E. Elwood St.  
Suite 14  
Phoenix, AZ 85040

USA  
contact@eurolacer.com  
+1 480 672 1100



**Europlacer France**  
Route de Cholet  
85620 Rocheservière

France  
contact@eurolacer.fr  
+33 (0)2 5131 0303



**Europlacer China**  
Floor 1, Building 1  
No.80 Huashen Road,  
Shanghai Waigaoqiao  
Free Trade Zone, 200131

P.R.China  
contact-china@eurolacer.com  
+86 (021) 5868 3500



**Europlacer Spain**  
AV Atenas 127  
19170 El Casar  
Guadalajara

Spain  
contact@eurolacer.es  
+34 (0)673 171 249



**Europlacer Italy**  
Via Flavia, 35  
34148 Trieste

Italy  
contact@eurolacer.it  
+39 (0)40 832 0563



**Europlacer Asia Pacific (excl. China)**  
No. 10, Lane 3, Anzhong St.  
MIT Industrial Park, Luzhu District,  
Taoyuan City 338

Taiwan  
contact-apac@eurolacer.com  
+886 (0)3 322 4499